



2.1-2.4 m

Elk

Eat: Grasses, willows, other flowering plants

Eaten by: Gray wolves, grizzly bears



58-99 cm (length, excluding tail)

Beavers

Eat: Willows

Eaten by: Gray wolves



8-10 cm (length, excluding tail)

Deer Mice

Eat: Grasses; other flowering plants

Eaten by: Coyotes



7-35 cm

Earthworms

Eat: Dead organic matter, fungi, bacteria

Eaten by: American robins



0.5-1 mm

Mites

Eat: Nematodes, fungi

Eaten by: Beetles



1-3 mm

Beetles

Eat: Mites

Eaten by: American robins

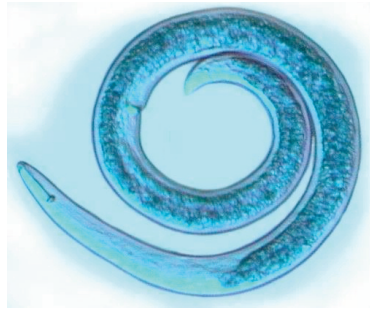


2-6 μ m

Bacteria

Consume: Dead organic matter

Eaten by: Protista, nematodes, earthworms



0.1-2.5 mm

Nematodes

Eat: Protista, fungi, bacteria

Eaten by: Mites



<80-400 cm

Willows

Eaten by: Elk



Grasses *(including seeds)*

Eaten by: Elk, deer mice, yellow-bellied marmots



Dead Organic Matter

Consumed by: Bacteria, fungi, earthworms



Other Flowering Plants

(including berries)

Eaten by: American robins, deer mice, elk, grizzly bears, yellow-bellied marmots



Fungi

Consume: Dead organic matter

Eaten by: Mites, nematodes, earthworms

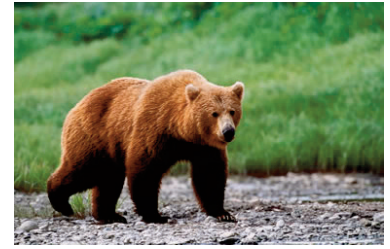


23-28 cm

American Robins

Eat: Earthworms, beetles, other flowering plants

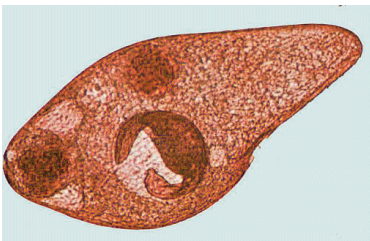
Eaten by: Snakes and birds of prey (*not included in this food web*)



1.8-3.3 m

Grizzly Bears

Eat: Other flowering plants, elk



<1 mm

Protista

Eat: Bacteria

Eaten by: Nematodes



1-1.4 m

Coyotes

Eat: deer mice, yellow-bellied marmots

Eaten by: Gray wolves



1.4-2 m

Gray Wolves

Eat: Elk, coyotes